

# TRANSFORMATION D'UN RURAL à Burtigny - Les Pies Grièches

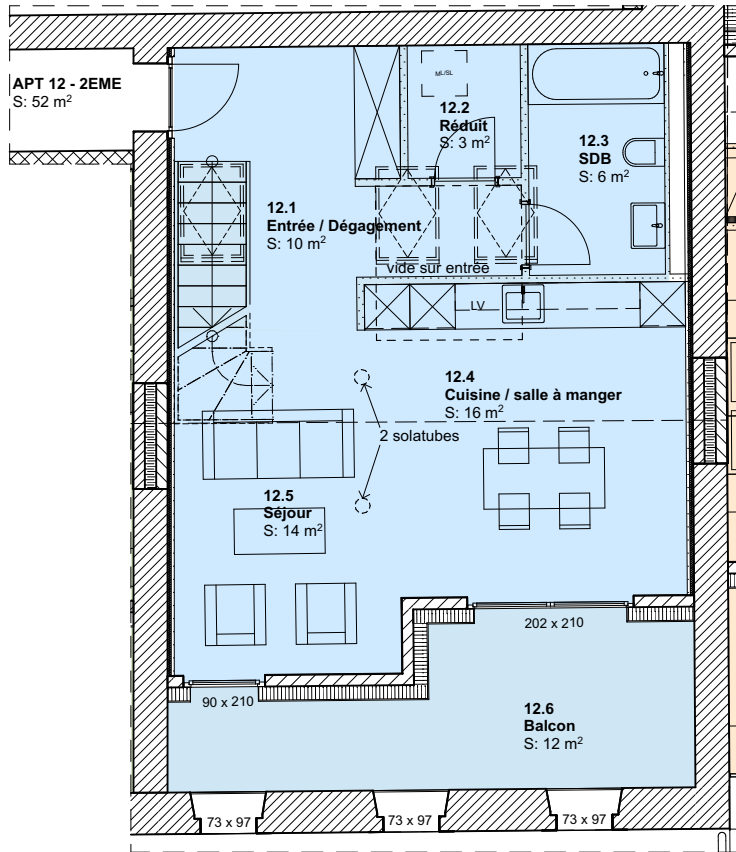
## 33/512 - Appartement n°12 - SURFACES APPARTEMENTS

Format: A4  
 Dessin: FC  
 Ech: 1:1000, 1:100

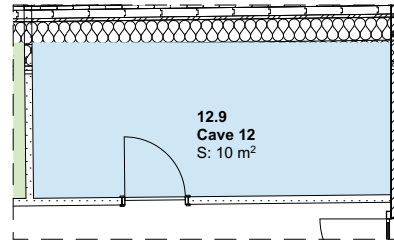
### Surfaces réelles

#### Appartement n°12 - 2.5 pièces

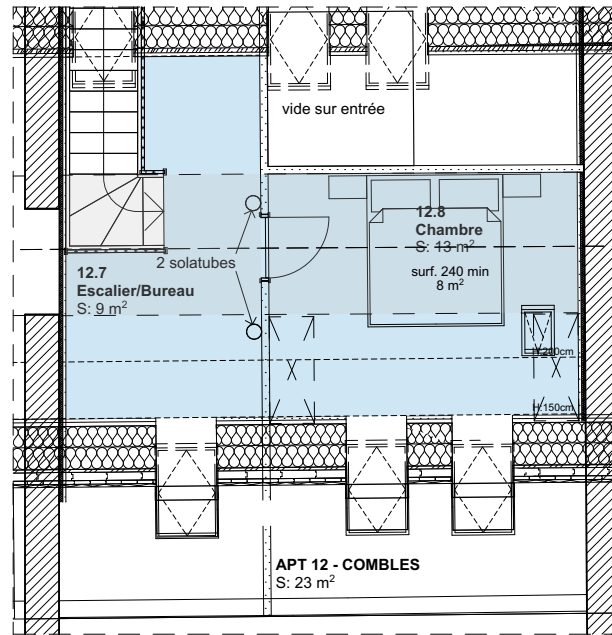
Surface Habitable	75
Surface Cave	10
Surface Balcon	12
<b>Total</b>	<b>97 m<sup>2</sup></b>



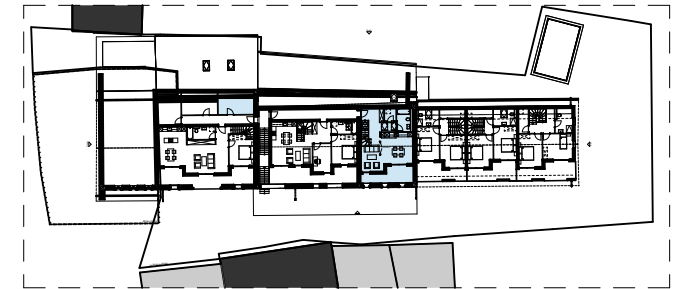
2ème Etage 1:100



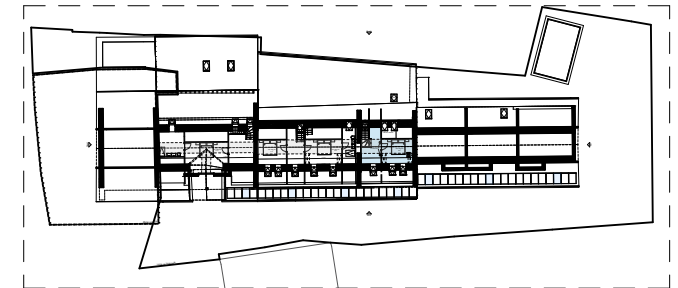
Cave 1:100



(surface combles jusqu'à 1.5m)  
 Combles 1:100



2ème Etage - Situation appartement 1:1000



Combles - Situation appartement 1:1000